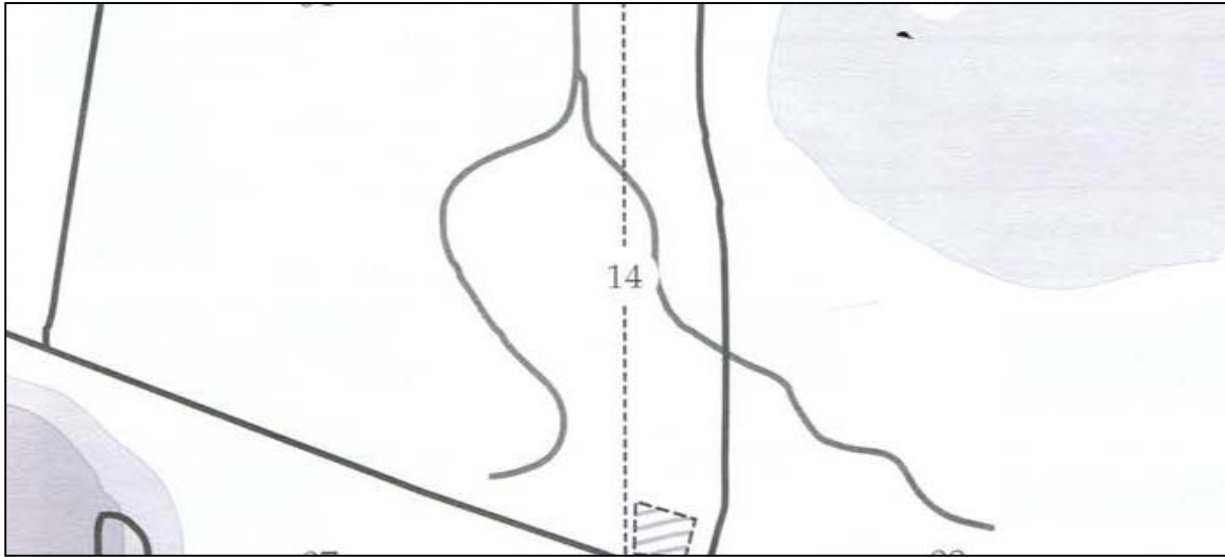


1813 Campaign: Battle Note Form

turn	5
zone	Gera
map #	14

Tactical Map



Attacker	Grande Armee nord	Commander	Marechal Ney
	<i>Formation</i>	<i>Battle Card</i>	<i>Notes</i>
1	II Corps/16e Division	planned defense	no effect
2	XI Cors/17e Division	holy ground	
3			
4			
5			
6			
7			
8			
	garrison strength	Class III earthworks	
Defender	Army of the North	Commander	FZM Gyulai
	<i>Formation</i>	<i>Battle Card</i>	<i>Notes</i>
1	IV Korps/Light Division	reinforcements	
2	IV Korps/1st Division	surprise	
3	IV Korps/2nd Division	holy ground	
4			
5			
6			
7			
8			
	garrison strength	Class III earthworks	

1813 Campaign: Army of bohemia

BG Commander		CinC Leadership Die	d8	Infantry Formations	AC, L, SQ	No. Units	14	
IV ArmeeKorps		CinC Command Radius	16 in	Cavalry Formations	AC, L	AMPs	14	
		CinC Sequence Deck	Poor	Grand Battery?	no	Battle Stance	Defend	
#	<i>Command Group</i>	<i>Leader Die</i>	<i>Radius</i>	<i>Unit</i>	<i>Combat Die</i>	<i>Defense Die</i>	<i>Unit Type</i>	<i>Unit Class</i>

IV Korps_Light Division	d10	20 in	grenzers (sk)	D10	D6	Infantry	Regular
			grenzers (sk)	D10	D6	Infantry	Regular
			uhlans		D6		Regular
			hussars		D8		Crack
IV Korps_1st Division	d8	16 in	line infantry (5-stand)	D8	D6	Infantry	Regular
			line infantry (5-stand)	D10	D6	Infantry	Regular
			line infantry (5-stand)	D10	D4	Infantry	Raw
			line infantry (5-stand)	D10	D4	Infantry	Raw
			foot artillery	D12	D6	Med. Art. (4-8lb)	Regular
IV Korps_2nd Division	d8	16 in	line infantry (5-stand)	D8	D6	Infantry	Regular
			line infantry (5-stand)	D10	D6	Infantry	Regular
			line infantry (5-stand)	D10	D4	Infantry	Raw
			line infantry (5-stand)	D10	D4	Infantry	Raw
			foot artillery	D8	D6	Hvy Art. (≥9lb)	Regular

1813 Campaign: France

BG Commander		CinC Leadership Die		d10	Infantry Formations	AC, L, SQ	No. Units	12
Ney		CinC Command Radius		20 in	Cavalry Formations	AC, L	AMPs	13
		CinC Sequence Deck		Poor	Grand Battery?	yes	Battle Stance	Attack
#	<i>Command Group</i>	<i>Leader Die</i>	<i>Radius</i>	<i>Unit</i>	<i>Combat Die</i>	<i>Defense Die</i>	<i>Unit Type</i>	<i>Unit Class</i>

2e Corps_16e Division	d10	20 in	infanterie de ligne	D10	D6	Infantry	Regular
			infanterie de ligne	D10	D6	Infantry	Regular
			infanterie de ligne	D10	D4	Infantry	Raw
			infanterie de ligne	D10	D4	Infantry	Raw
			infanterie legere (sk)	D8	D6	Infantry	Regular
			artillerie a pied	D10	D6	Med. Art. (4-8lb)	Regular
			artillerie a pied	D10	D6	Hvy Art. (≥9lb)	Regular

11e Corps d'Armee **d12+1** **26 in**

11e Corps_17e Division	d10	20 in	infanterie (Wurttemberg)	D10	D6	Infantry	Regular
			infanterie (Wurttemberg)	D8	D6	Infantry	Regular
			infanterie (Wurttemberg)	D8	D6	Infantry	Regular
			infanterie (Wurttemberg)	D10	D6	Infantry	Regular
			artillerie a pied	D10	D6	Med. Art. (4-8lb)	Regular

1813 Campaign: Post-Battle Effects

Territory Name	Gera	Turn #	5
-----------------------	------	---------------	---

City Type	major town
------------------	------------

Victor	Army of the North
---------------	-------------------

<i>OAMP</i>	14
-------------	----

<i>FAMP</i>	24
-------------	----

<i>Battle Points</i>	23
----------------------	----

<i>Margin of Victory</i>	decisive victory
--------------------------	------------------

National Will Point Additions

Margin of Victory v. City Type	6
--------------------------------	---

Loser	Grande Armee (nord)
--------------	---------------------

<i>OAMP</i>	13
-------------	----

<i>FAMP</i>	0
-------------	---

NWP Losses

Margin of Defeat	decisive defeat	20
------------------	-----------------	----

Losing Force Size	<i>marginal</i>	<i>decisive</i>	<i>crushing</i>	<i>total</i>
2 divisions	1d6	2d6	3d6	7

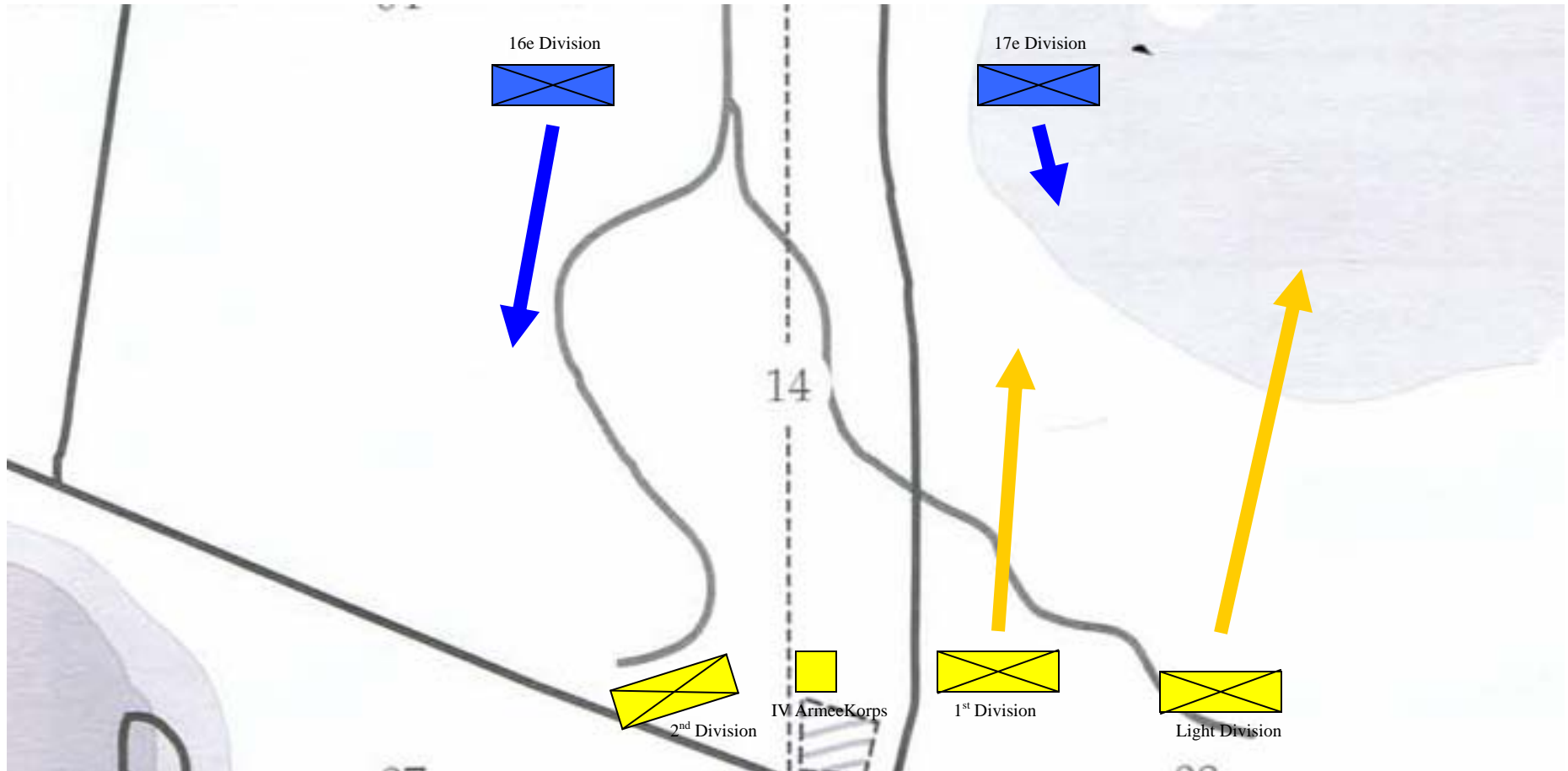
City Type	<i>marginal</i>	<i>decisive</i>	<i>crushing</i>	<i>total</i>
major town	1d8	2d8	3d8	12

Total National Will Point Losses	39
-----------------------------------------	-----------

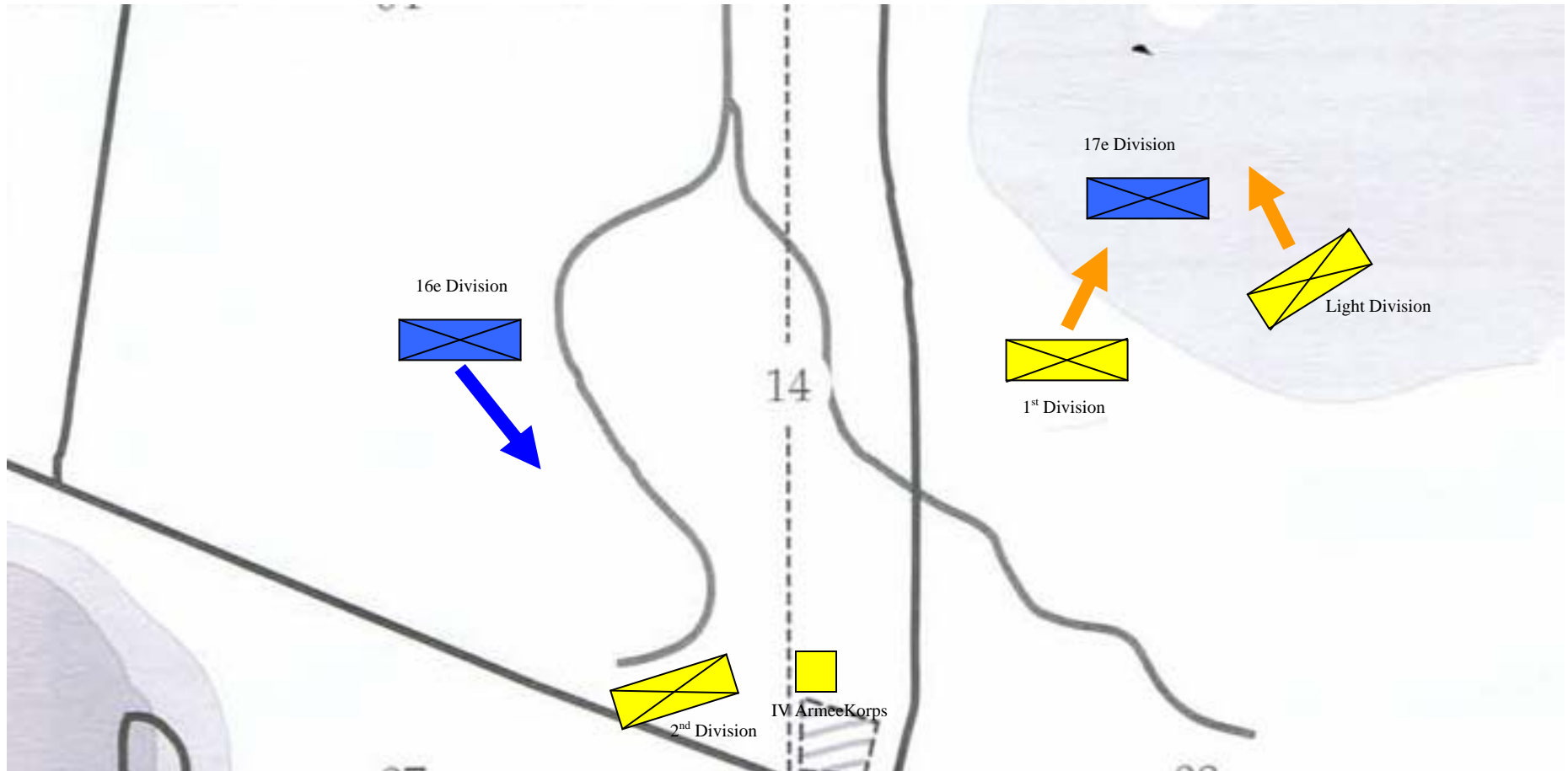
Contingent Losses

Contingent Name	Wurtemberg
-----------------	------------

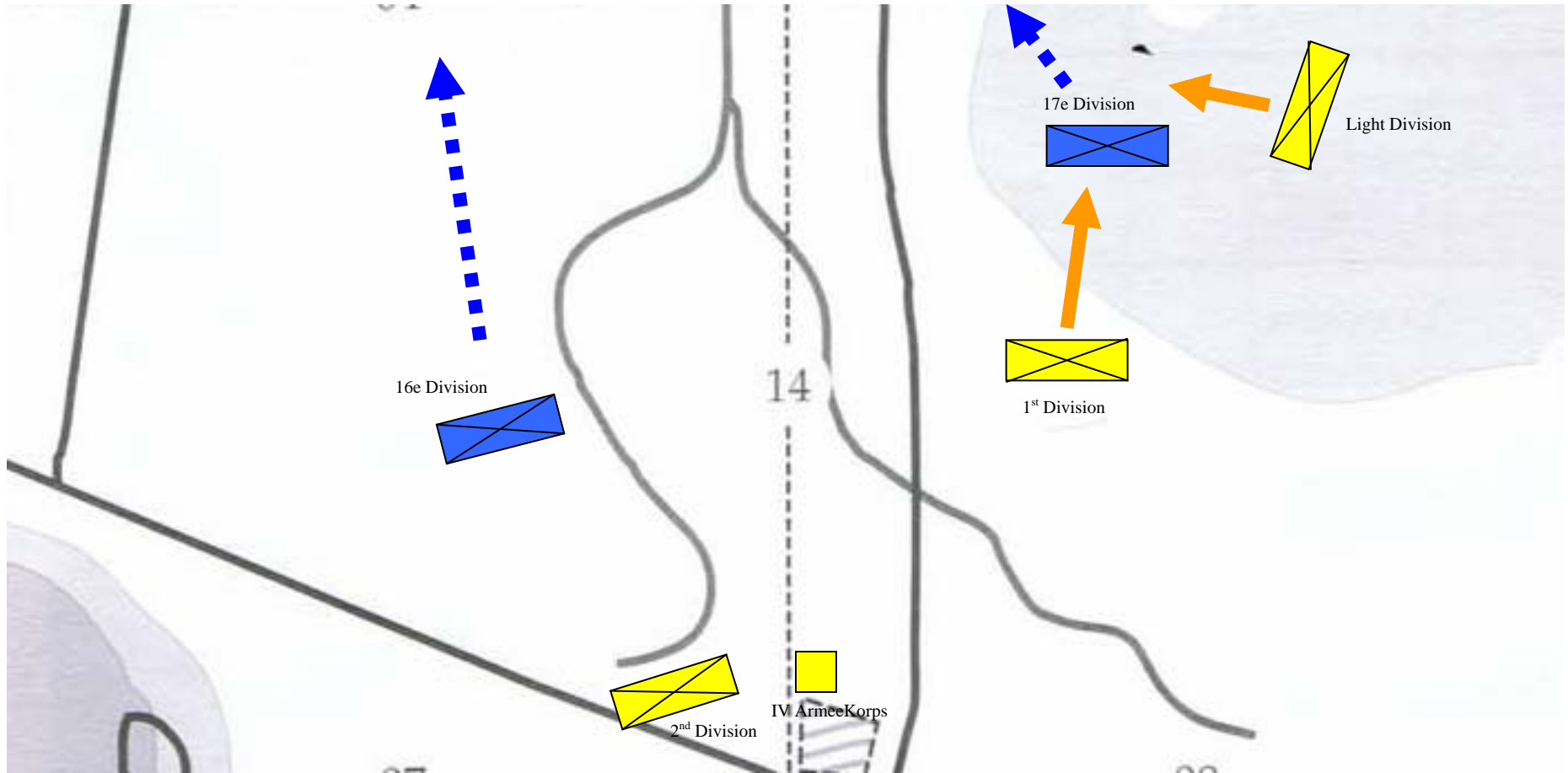
Losing Force Size	<i>marginal</i>	<i>decisive</i>	<i>crushing</i>	<i>total</i>
1 divisions	1d6	2d6	3d6	9



Battle of Gera (opening phase)



Battle of Gera (Austrian attack)



Battle of Gera (final phase)